

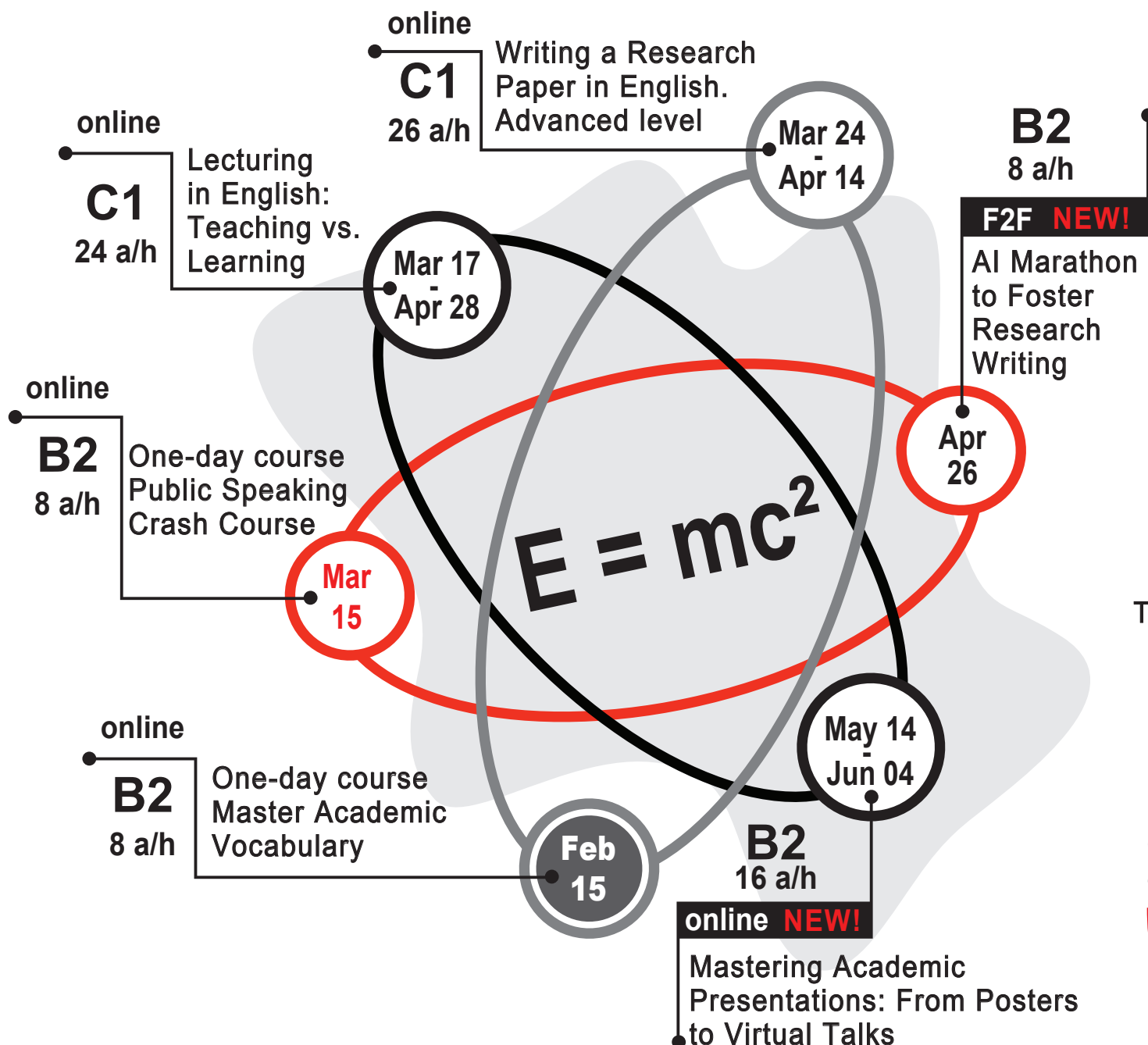


HSE ACADEMIC WRITING CENTER

COURSES

RIGHT TIME TO WRITE

WORKSHOPS



The invention and structure of definitions in academic texts

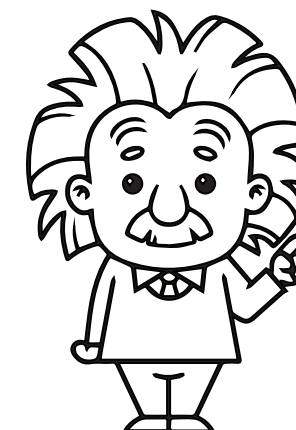
AI tools for learning / teaching writing

How to adapt to audiences using academic precision and register

"The rise of Asia" era: Typical features of communication with Chinese partners

Five-o'clock tea at AWC

Feb 19 and 26
Apr 10



Mar 11

Feb 25

Feb 11

Jan 29

Mar 25

Apr 08

Apr 22

May 20

May 27

June 10

Стратегии научного письма для публикационных целей на русском языке (in Russian)

Show your attitude: Modality as an element of the author's voice

Using chatbots and automatic translation for research writing

English pronunciation: Strategies to ensure intelligibility

Subjectivity in research articles: Are "soft" sciences less objective than "hard" ones?

Developing thinking skills for better writing



<https://academics.hse.ru/awc/>
youtube: @HSE Academic Writing Center
VK: <https://vk.com/club227014415>

Contacts

11 Pokrovsky Blvd, Room G-505. Tel: +7 (495) 772-95-90
Natalia Fedorova: ext. 27766, nfedorova@hse.ru
Svetlana Protopopova: ext. 27962, sprotopopova@hse.ru
Natalia Zharkova: ext. 28287, nzharkova@hse.ru
Anna-Victoria Ogryzova, ext. 27768, aogryzova@hse.ru

Individual consultations

5 days a week
128 sessions a month
3 consultants

Joel Cumberland
David Connolly
Konstantin Sheiko